



**UNIVERSAL
HANDLING EQUIPMENT**

**Front Loaders
Roll-Off Hoists
Hook-Lifts
Trailers
Luggers
Dump Box
Compactors
▶ Refuse Containers**

Flat Top "FT"

Front End Load Container



Applications

- Strip Malls
- Gas Stations
- Schools
- Restaurants
- Apartment Buildings
- Office Buildings
- Commercial Complexes
- Retail Outlets
- Warehouses
- Recycling Facilities

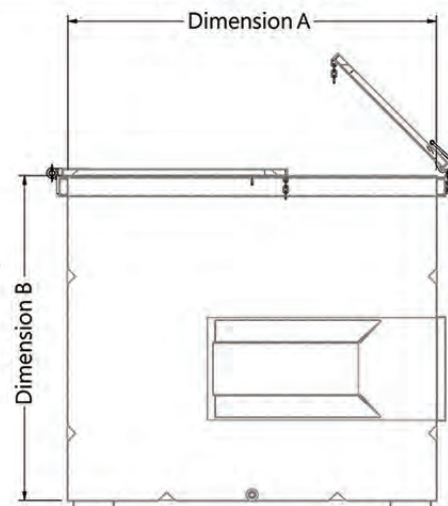
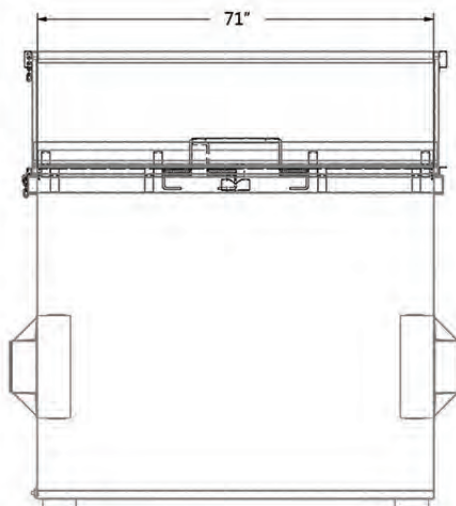
Universal Handling Equipment

Flat Top "FT" Front End Load Container

Specifications

Flat Top "FT" Front End Container		
Model	Dimension	
	A	B
FT2	36"	36"
FT3	42"	48"
FT4	54"	48"
FT6	66"	58"
FT8	66"	81"

Specifications	
Walls	13 Gauge
Floor	11 Gauge
Pocket - Channel	7 Gauge
Pocket - Wrap	10 Gauge
Drain Plug	3/4" Diameter
Plastic Lids	Double Walled
Metal Lids	16 Ga. Reinforced with Formed Channels



Included On All

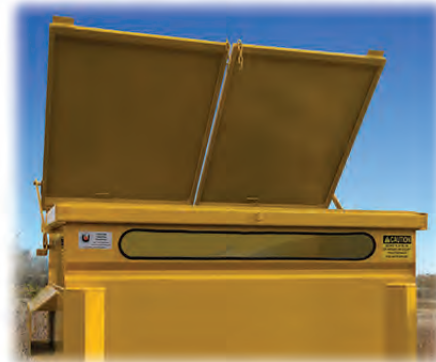
Drain Plugs
Caster Pads
Self-Guiding Fork Pockets

V-Bends in Floors and Walls for Extra Reinforcement
Reinforced Corner Design With Integral Bumper
Full Gussets/No Step Pockets

Options

6' or 8" Casters
Lid Lock
Side Doors (Plastic or Metal)

Plastic or Metal (Butterfly or Front Opening) Lids
Cardboard Slot c/w Reinforced Rubber Edging



4024 Charles Street
Red Deer County
Alberta, T4S 2B3
Canada

Sales: 403.346.1233

Toll Free: 1.877.UHE.6163 (1.877.843.6163)

universalhandling.com