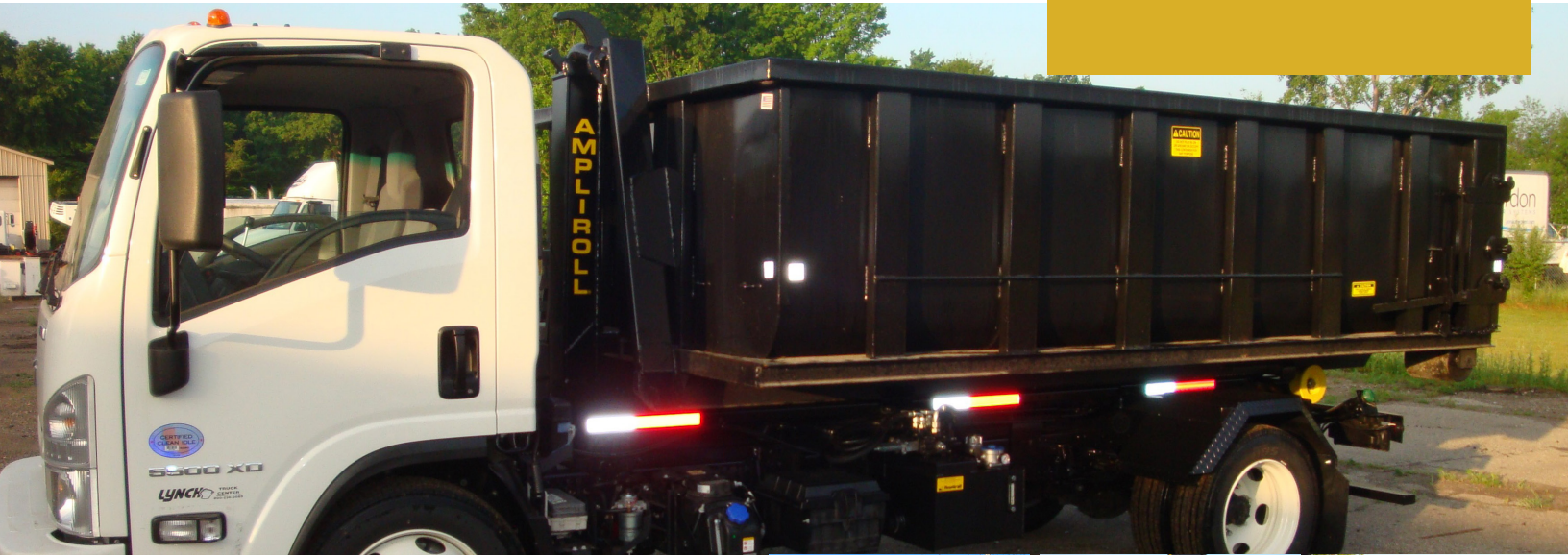




616-863-9155 | equipment@amplirollusa.com | amplirollusa.com

18,000
POUNDS



WHY BUY A HOOKLIFT?

Do you have trucks that are not always being used?

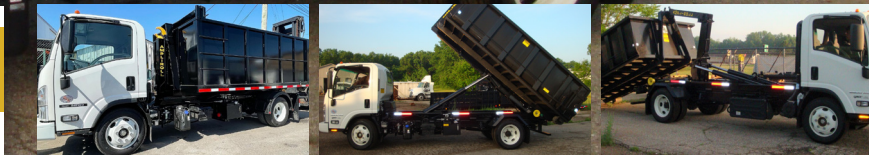
Do you have a difficult time finding quality drivers?

Is there a piece of equipment you could use, but can't justify adding another truck?

It's Multi-tasking for your truck.
The possibilities are Infinite.

DELIVER | LOAD | DUMP

The *Ampliroll Hooklift* was invented in 1969. Our process of laser cutting and robotic welding enables us to provide you with a complete line of hooklifts, that eliminate the use of SHIMS and WEAR PADS.



FEATURES:

- **Sliding Jib** gives you greater range of body lengths and optimal weight distribution.
- **Twin Pivot** allows you to dump a uniform pile of material.
- **Dual Cylinders** gives greater stability while dumping and loading.
- **Safely operated** from the drivers seat.
- **Dock Level** loading and unloading
- **Double your payload** by pulling another body on a trailer.
- **Maneuverable** to operate, the container can be loaded within a 60 degree arc.
- **Spot** the container exactly where you want it, by pushing it into place with no damage.
- **Quickly loads** a body in less than one minute.
- **Investment** that will outlast your truck, Amplirolls® will last over 25 years.
- **Meets** all highway safety standards.

	AL 95SS-12	AMP 95SS-12	AL 95S-15	AMP 95S-15	AL 95L-16	AMP 95L-16
LIFTING CAPACITY (including container)	18,000 lbs.	18,000 lbs.	18,000 lbs.	18,000 lbs.	18,000 lbs.	18,000 lbs.
SHIPPING WEIGHT	2408 lbs.	2408 lbs.	2408 lbs.	2408 lbs.	2417 lbs.	2408 lbs.
DUMP ANGLE	54°	58°	54°	60°	54°	60°
CAB TO AXLE*	96" - 120"	96" - 120"	120" - 138"	120" - 138"	126" - 150"	126" - 150"
OVER ALL LENGTH From Hook**	146"	146"	162"	162"	174"	174"
BODY LENGTH	10' - 13'	11' - 13'	10' - 16'	13' - 16'	11' - 17.5'	14' - 17.5'

HOOK HEIGHT

Standard

54"

Optional

36" or MA 36"-54" / TEL 36"-54"

HYDRAULIC SPECIFICATIONS:

Pump

Axial piston, 5,7000 psi, 11 GPM @1,200 RPM,-
Standard - DIN Shaft or Optional SAE 7/8th Shaft

Controls

cable operated valve

Reservoir

12 gallons

Filter

10 micron, return line with replaceable
cartridge

Maximum operating pressure

4,200 psi

Hoses, tubes & fittings

all JIC/SAE specifications

STEEL: SPECIAL ALLOY

ASTM A 572

in jib, central arm and tilting frame

SAFETY DEVICES:

Safety valve

prevents jib operation during dump
mode

Counter-balance valve

to hold cylinder if hose breaks

Automatic locking device

for dump mode

Slide through container locks

TRUCK REQUIREMENTS:

GVWR

19,500 to 26,000 lbs

Front Axle Capacity

6,000 to 8,000 lbs

Rear Axles Capacity

15,000 to 18,000 lbs

NOTICE:

Longer containers may not comply with I.C.C. bumper regulations and can effect dump angle.

*Need to confirm CA or CT with factory or local dealer for proper installation.

**Some subframes are longer, check with local dealer.



4750 14 Mile Road NE | Rockford, MI 49341
 Phone: 616-863-9155
 Fax: 616-863-9177
 Toll Free: 866-822-3580
 equipment@amplirollusa.com
 amplirollusa.com

Distributed by:

